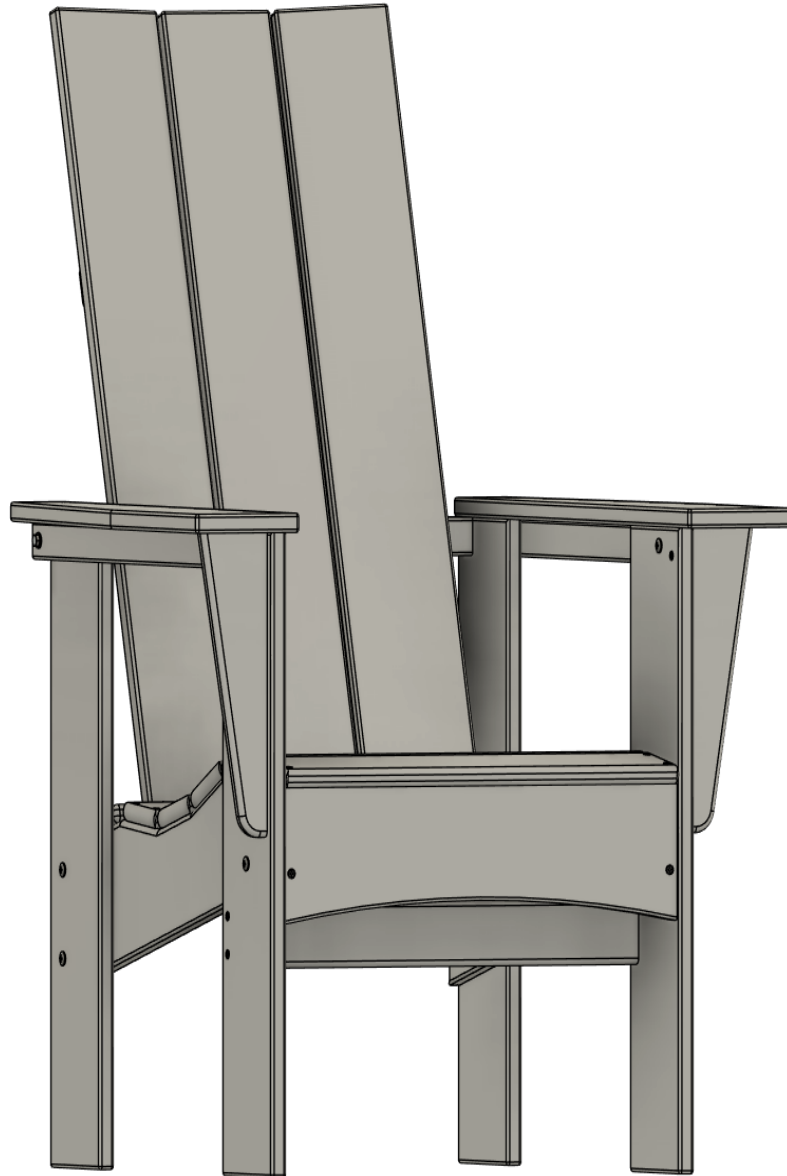


Raised and Upright Assembly Instructions

For Sand Creek, Windsor and Alpine Adirondacks



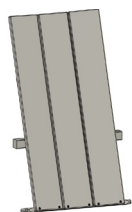
www.bytheyard.net

Date of Purchase: _____

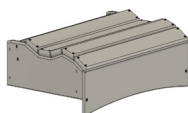
Raised and Upright

Assembly Pieces Enclosed:

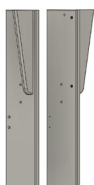
(1) Back Assembly



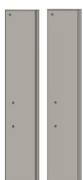
(1) Seat Assembly



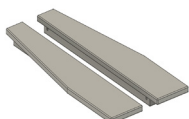
(2) Front Legs



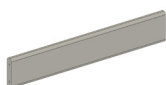
(2) Back Legs



(2) Arm Assemblies



(1) Sway Brace



Hardware Pack H10019 Enclosed:

(4) 1-1/2" Screws



(4) 2" Screws



(8) 2" Bolts



(2) 2-1/4" Bolts



(2) 3" Lag Bolts



(12) Washers



(10) Nuts



Tools Needed:

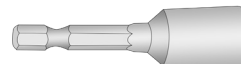
#2 Philips Screwdriver Bit



#3 Philips Screwdriver Bit



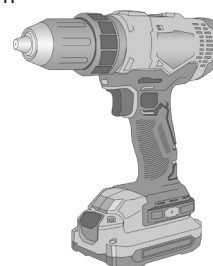
7/16" Nut Driver Bit



#3 Philips Screwdriver



Handheld Drill



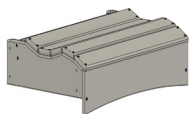
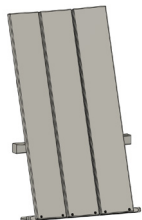
Step 1: Attach Back Assembly to Seat Assembly

Pieces Needed:

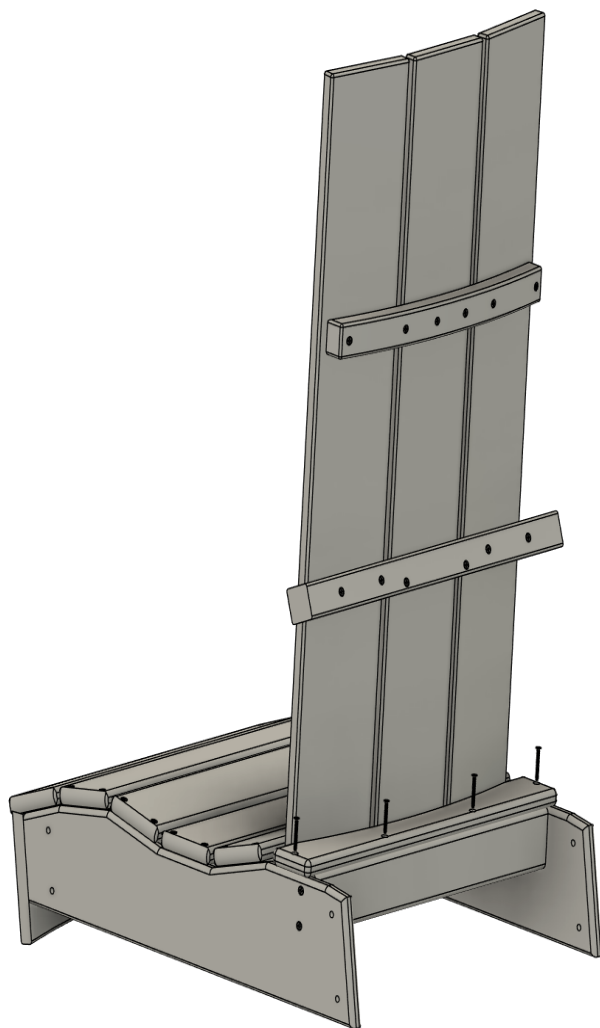
(1) Back Assembly

(1) Seat Assembly

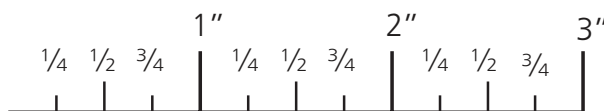
(4) 1-1/2" Screws



Lay the parts out on a flat, non-abrasive surface to prevent scratching. Align the bottom of the back assembly with the center brace in the seat assembly. Insert (4) 1-1/2" screws into the countersunk holes and tighten using a #2 Philips screwdriver bit and handheld drill.



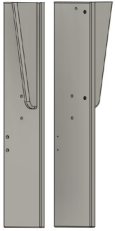
*Use our ruler to differentiate your hardware!



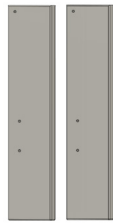
Step 2: Attach Legs

Pieces Needed:

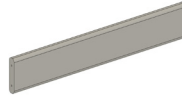
(2) Front Legs



(2) Back Legs



(1) Sway Brace



(8) 2" Bolts



(8) Washers



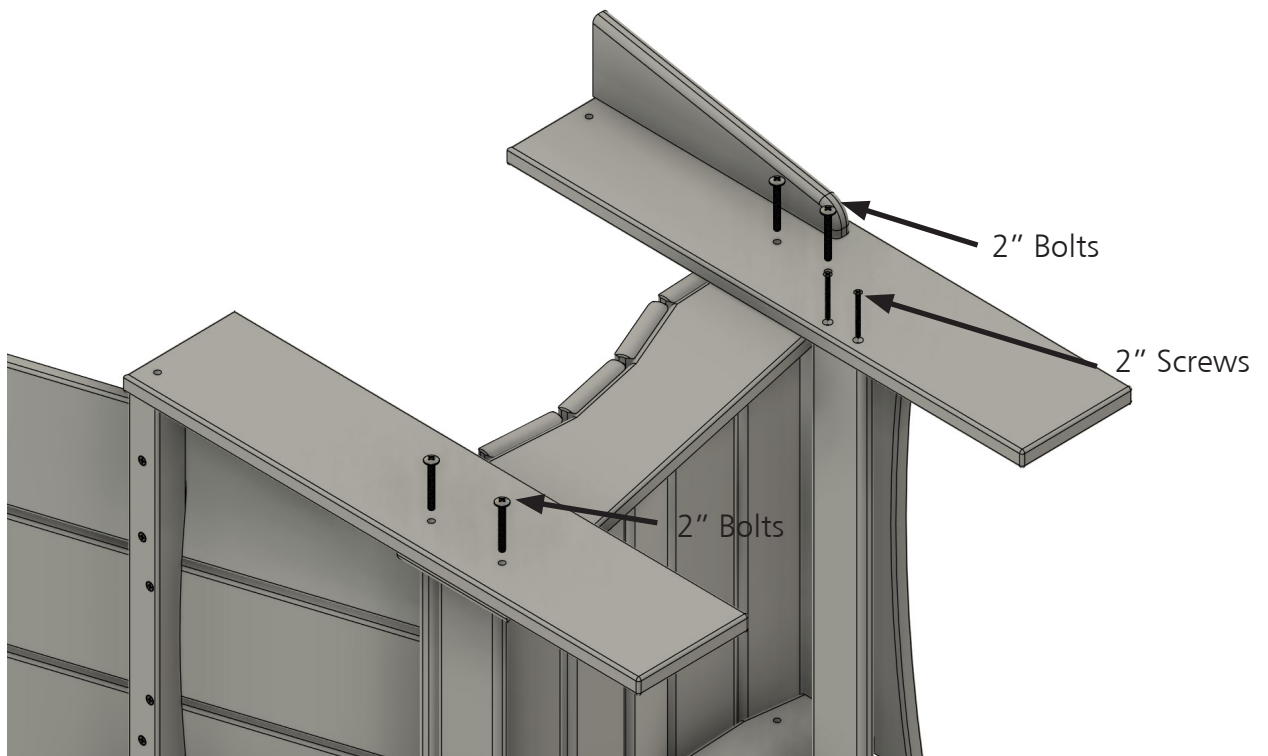
(8) Nuts



(4) 2" Screws



Lay the chair on its side. Position the front and back legs on the seat assembly so the bolt holes align. Attach the legs to the seat frame with (4) 2" bolts and secure with (4) washers and (4) nuts, hand tightening only. Next, line up the pilot holes in the end of the sway brace with the countersunk holes in the front leg. Fasten the sway brace with (2) 2" screws using a #2 Philips screwdriver bit and handheld drill. Turn the chair over and repeat on the other side.

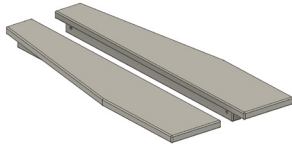


Step 3: Attach Arm Assemblies

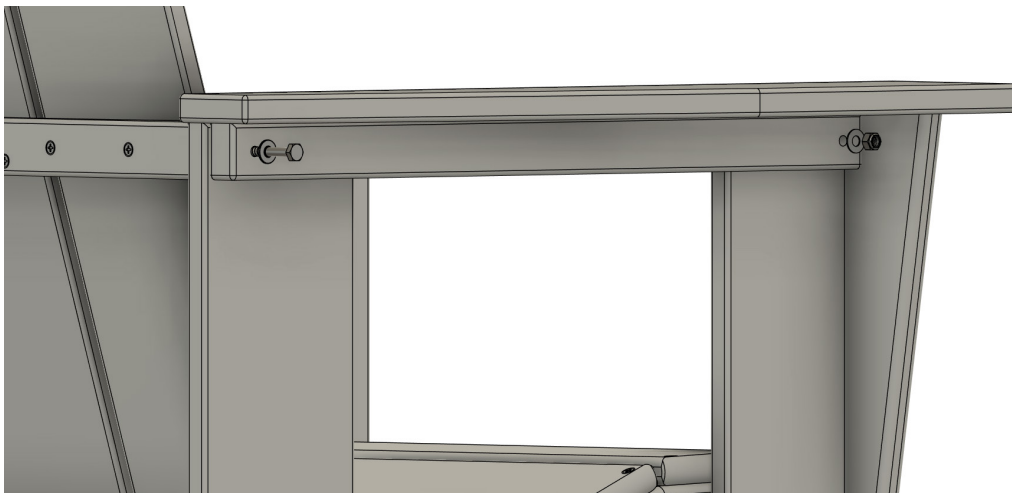
Pieces Needed:

(2) Arm Assemblies

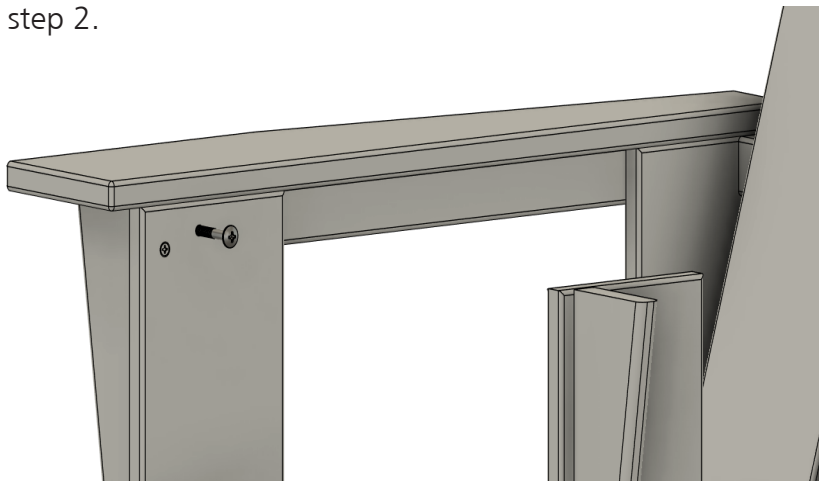
(4) 3" Screws



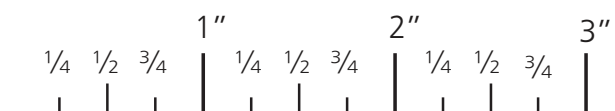
Stand the chair upright. Position the arm assembly on top of the legs so the holes align. Attach the back of the arm rest to the back assembly using (1) 3" lag bolt and washer. Align the tip of the lag bolt with the punch hole in the back brace. Tighten the lag bolt using a 7/16" nut driver bit and handhel drill.



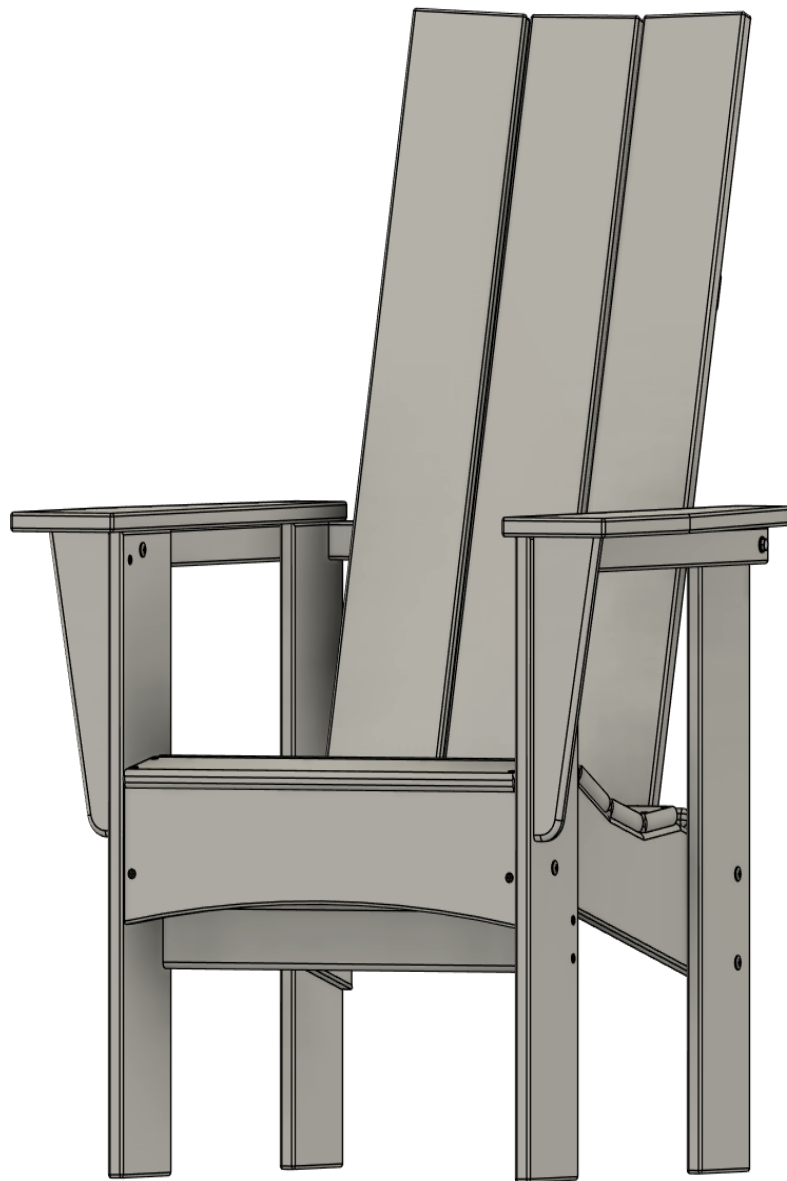
From the inside of the front leg, insert (1) 2-1/4" bolt and secure with a washer and nut. Tighten the bolt using a 7/16" nut driver bit and handhel drill. Prevent the bolt head from turning by using a #3 Philips screwdriver. Repeat on the other side. Once both arm assemblies are secure, go back and tighten the bolts from step 2.



*Use our ruler to differentiate your hardware!



Step 4: Admire Your Handiwork and Enjoy!







Having Trouble?

Visit www.bytheyard.net or Contact Us at 877.220.0448